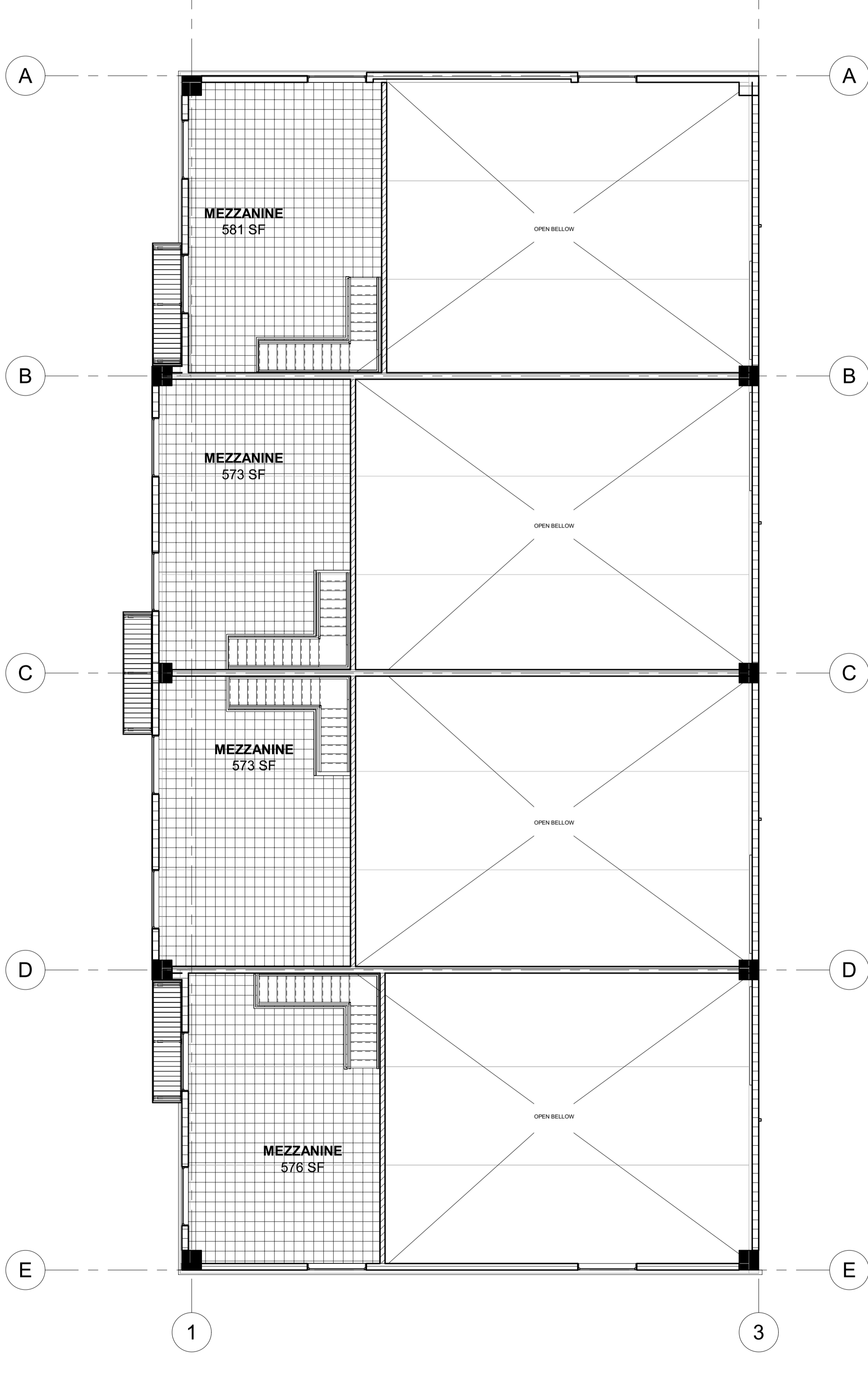
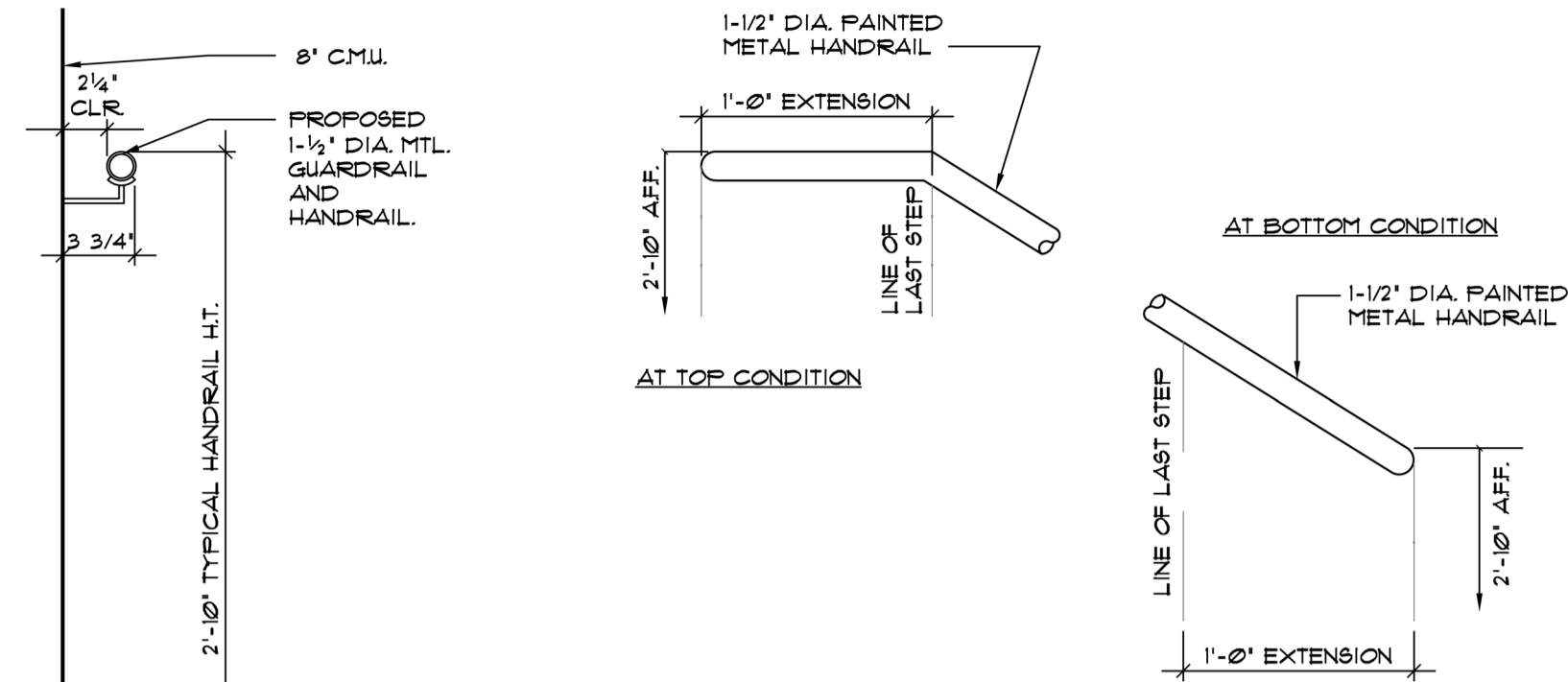


1 1ST FLOOR LIFE SAFETY PLAN
1/8" = 1'-0"



2 2ND FLOOR PLAN LIFE SAFETY
1/8" = 1'-0"



5 TYP HANDRAIL DETAIL

LEGEND	
	HORN STROBE
	SMOKE DETECTOR
	COMBO EMERGENCY LIGHTS & EXIT SIGN
	FIRE EXTINGUISHER 5LB WALL MOUNTED 45" A.F.F

4 LEGEND

CODE SAFETY NOTES				
OCCUPANCY GROUP		MAX. TRAVEL DIST. SPRINKLERED	MAX. DEAD END	COMMON PATH OF TRAVEL
9600 S.F./200 OCC.	REQUIRED	200'	50 FT.	50 FT.
	PROVIDED	50'-10"	-	0'-0"
EGRESS PATTERN AND WALL LAYOUT DOES NOT EXCEED: A) THE MAX TRAVEL DISTANCE B) NO DEAD END TRAVEL EXCESS OF 20 FT C) COMMON PATH OF TRAVEL DOES NOT EXCEED 5 FT				
FINISH CLASSIFICATION PER BY OCCUPANCY AS PER FBC-B-803.9 PROPOSED BUILDING IS SPRINKLERED: A) INTERIOR EXIST STAIRWAYS, RAMPS & PASSAGEWAYS- "C" B) CORRIDORS & ENCLOSURE FOR EXIT ACCESS STAIRWAYS & RAMPS- "C" C) ROOMS AND ENCLOSED SPACES- "C"				
WORK PERFORMED SHALL COMPLY WITH THE FLORIDA BUILDING CODE 2020-7TH. EDITION- BUILDING, FLORIDA FIRE PREVENTION CODE 2020-7TH. EDITION, FLORIDA BUILDING CODE- ACCESSIBILITY, NFPA 1&101, 2018 EDITION, NFPA 13&13R NATIONAL ELECTRICAL CODE.				

3 CODE SAFETY NOTES

Revision		
#	REV	DATE BY

PROPOSED WAREHOUSE FOR:
REGANZANI GROUP LLC
VACANT PROPERTY, SW 3RD STREET,
POMPANO BEACH, FL, 33069

SEAL: AR 0017852
Luis La Rosa
Digitally signed by
Luis La Rosa
Date: 2024.05.29
18:04:59 -04'00'

DRAWN:	Author
CHECKED:	Checker
DATE:	11/07/2023
SCALE:	AS NOTED
JOB. NO.:	023-042
SHEET:	
A 1.6	
OF:	SHEETS:

100% CONSTRUCTION DOCUMENTS

1/8" = 1'-0"

5/29/2024 6:02:12 PM